

ASPEN CONDO

LIVE | LIFE | REST

URBAN
ONE-STOP
LIVING

LIVE + LIFE + REST = ASPEN

URBAN
ONE-STOP
LIVING

“LIVE”

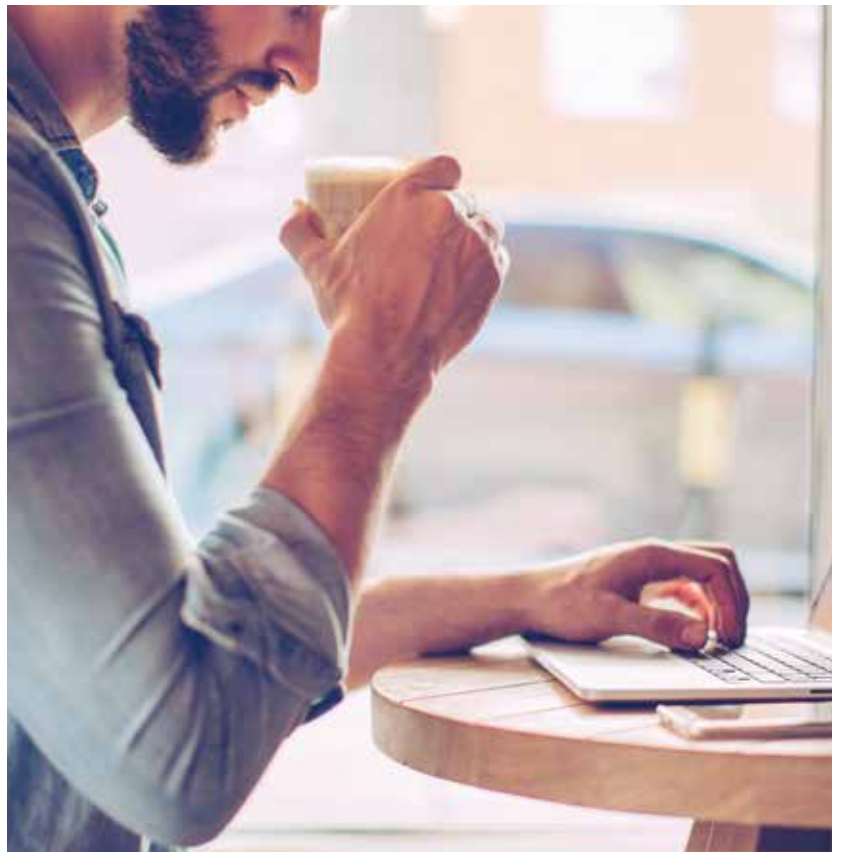
Live the Urbanista lifestyle,
surrounded by all the conveniences.

“LIFE”

Life quality...
where happiness plays the key role.

“REST”

Relax in your special place
designed for every day's joy.



Fulfill all life's needs at ASPEN Condo,
the 'URBAN ONE-STOP LIVING'

Fully-furnished, Scandinavian-styled condominium
with community's Lifestyle club.
The first on Lasalle (Sukhumvit 105) Road
to complete the living with Urban Idea Space,
Urban Greenscape, and Urban Alternative Gym.*



ASPEN URBAN ONE-STOP LIVING

It's unsurprising to find Aspen Condo Lasalle beyond compare in convenience and contentment for urban lives. As we have designed Aspen Condo Lasalle the "URBAN ONE-STOP LIVING" community, pioneering Thailand's first Lifestyle Club. Featuring the Urban Idea Space, Urban Greenscape, and Urban Alternative Gym, we complete all aspects of your everyday lives. The needs to go out are minimized by Starbucks, Tops, and S&P located nearby. Sikarin Hospital is right across the street. In mere minutes, you can enjoy occasional hangout at nearby malls, Central City Bangna, Mega Bangna, IKEA, or Chic Republic to your heart's content.





The quality of life at ASPEN also extends beyond the nearby conveniences, and to the ease of travel as well. From the main road connections such as Srinakharin or Bangna-Trad, and the links to MRT and BTS, both to existing and upcoming stations, they provide you the commuting satisfaction you deserve.

ASPEN Condo is your center of easy lifestyle, meeting your needs and beyond truly for your everyday life.

‘A’ PLACE TO BE INSPIRED AND FIND IDEAS



Computer-generated image.



Computer-generated image.



ASPEN 'URBAN IDEA SPACE'

Whether you are a freelancer seeking refreshing botanic vibe to indulge while working, or an enthusiastic entrepreneur looking for a new meeting place to discuss hot new startups, or a lifestyle blogger in need of a place to write posts on chic trips for social media, or just craving to chill in a cozy ambience; we have it for all within the URBAN IDEA SPACE.

ASPEN 'URBAN IDEA SPACE' is a new take on Co-Working space, balancing design and functions for the working generation creatively. With small cafe corner and vending machines, you can fully enjoy yourself, all day or all night, free from the limit of regular Co-Working space elsewhere.



Computer-generated image.

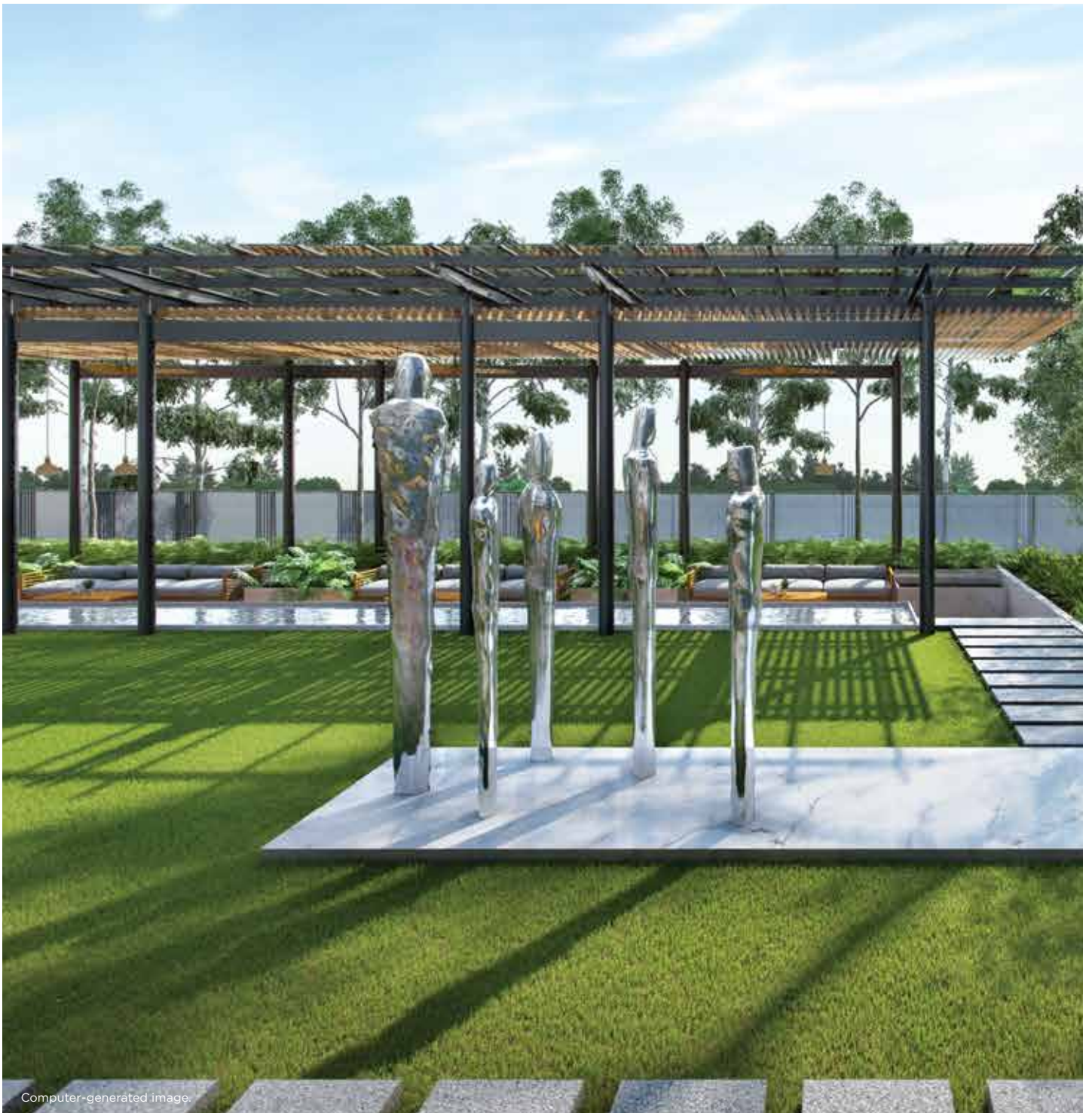
**‘A’
PLACE TO SIT
BLISSFULLY AND
BE SURROUNDED
BY NATURE**





ASPEN 'URBAN GREENSCAPE'

The days of relaxation are now closer to you than ever before. Discover your new favorite place surrounded by pleasant landscape, only a few steps away from your bedroom, in URBAN GREENSCAPE. Enjoy your favorite outdoor activities in the refined landscape, be the picnic on green grass, mid-morning yoga out in the soft sunlight, relaxing in the semi-outdoor lounge on comfy cushions with a book in your hand, sipping your personal recipe latte, or jamming ukulele session with your neighbors. Relax your stress away, along with the sound of the running water, at the **ASPEN 'URBAN GREENSCAPE'**



Computer-generated image.

'A' PLACE THAT FITS YOUR HEALTHY LIFESTYLE



Computer-generated image.



Immersing yourself in the pool is a great way to cool down after a gym session at ASPEN. With quality and safety in mind, the pool is designed as 20 x 8 sq.m. saline system and separated adults and children zones with cascading partition in between.



Computer-generated image.

FULLY-FURNISHED

with unique design furnitures,
Hood, Hob, and Sink in the kitchen area,
and Premium Sanitary wares from American Standard.
Area = 23.64 – 24.09 sq.m.



A



Computer-generated image.

‘A’ THOUGHTFULLY DESIGNED SPACE FOR EVERYONE

ONE-BEDROOM A

If you are looking for a balanced life, this room type perfectly matches your need. An open plan makes every square meter in this room more useful and wider for your personal usage, answers all of your need, and fits your Urbanista lifestyle very well.



Computer-generated image.

FULLY-FURNISHED

with unique design furnitures,
Hood, Hob, and Sink in the kitchen area,
and Premium Sanitary wares from
American Standard.

Area = 26.31 – 26.97 sq.m.

B



ONE-BEDROOM B

The room for you and your special one is outstanding with organized design to make your bedroom bigger to make the most of your privacy. It also makes the kitchen more suited for you to create a new recipes everyday.



Computer-generated image.

‘A’ SPECIAL PLACE FOR TWO



‘A’ BLISSFUL HOME FOR A YOUNG FAMILY

C1



FULLY-FURNISHED

with unique design furnitures,
Hood, Hob, and Sink in the kitchen area,
and Premium Sanitary wares from American Standard.
Area = 34.41 – 34.98 sq.m.

ONE-BEDROOM C1

More spacious and more special
for a new chapter of a family.
The open plan merges a living room
and a kitchen into one, giving you freedom
to make it fit your lifestyle. Plus, increased
bedroom area gives you greater sense
of privacy.



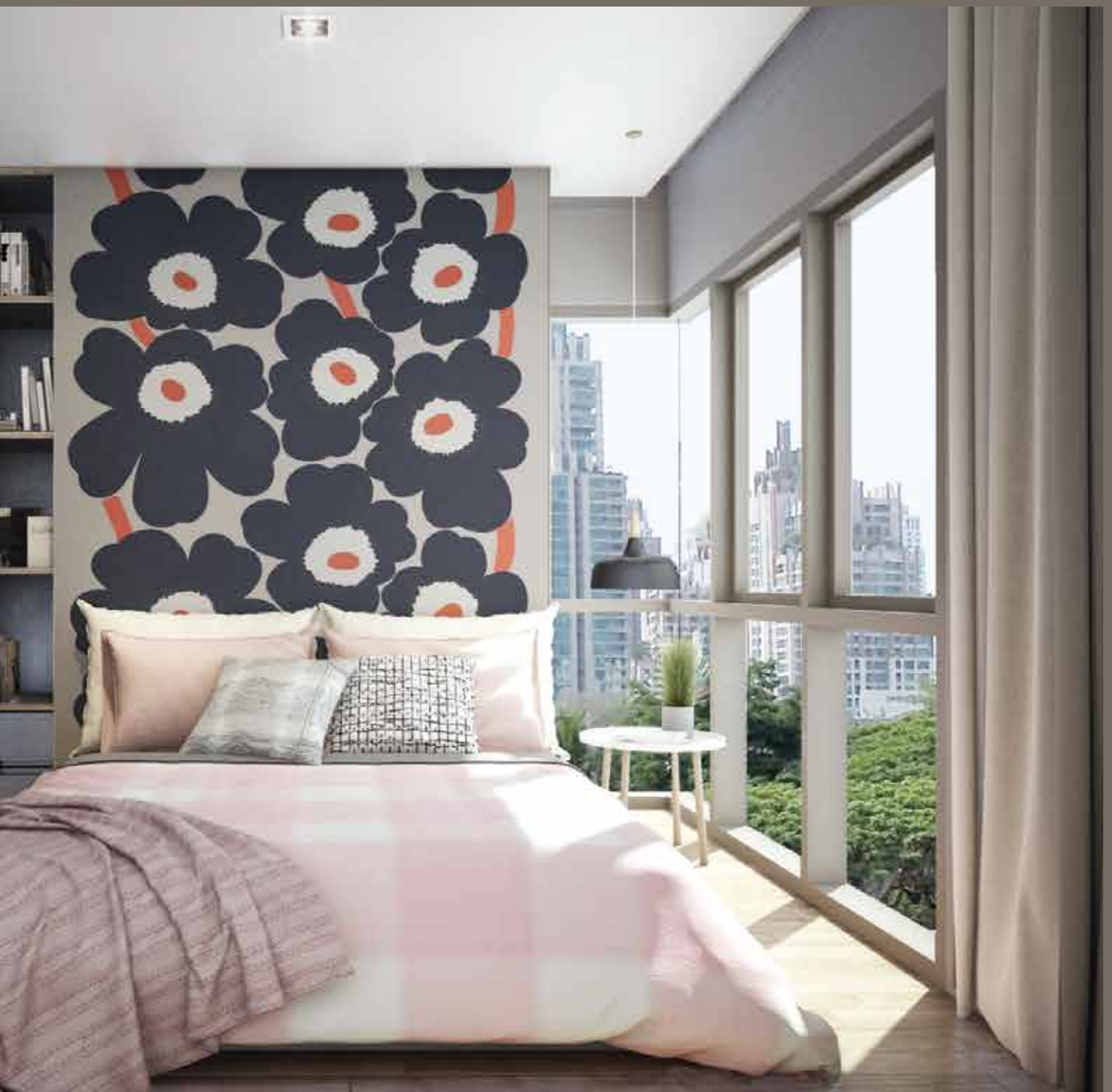


**‘A’
PERFECT
HOME
FOR YOUR
LOVED ONES**

C2



Computer-generated image.

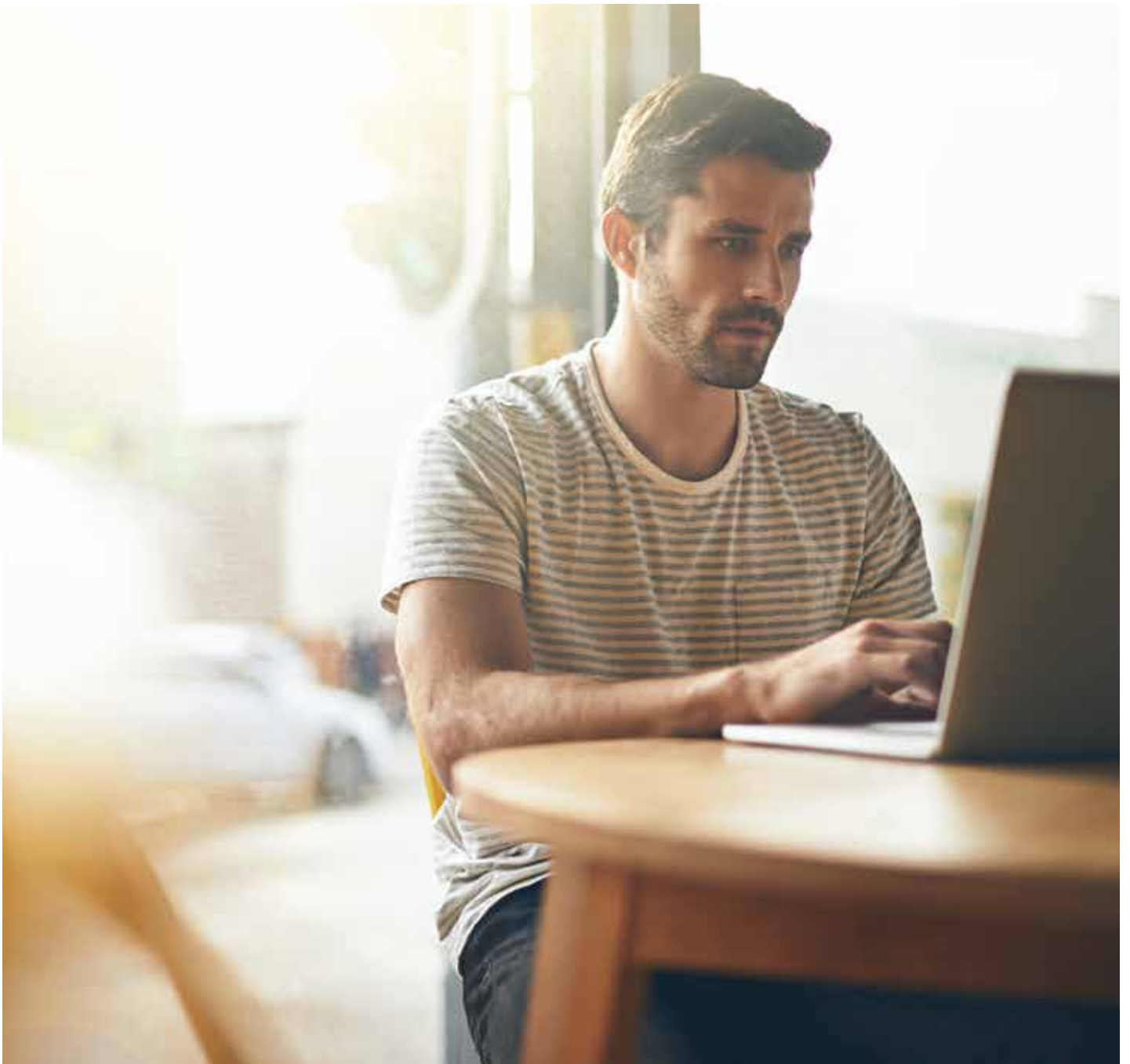


FULLY-FURNISHED

with unique design furnitures,
Hood, Hob, and Sink in the kitchen area,
and Premium Sanitary wares from American Standard.
Area = 34.65 – 34.98 sq.m.

ONE-BEDROOM C2

This type of room is designed for a perfect ideal space for a family. The living room and kitchen are functionally included together by an open plan to allow everyone easy access. The separated bedroom provides privacy. Plus, the kitchen is more organized for your family's chef.



**ALL
YOU NEED
IN ONE
PLACE**

‘ASPEN CONDO’

We are determined to fulfill your living with happiness at every step. Apart from the complete living necessities we provided, the surrounding context of life also gives you the living quality in every day.

ALL THE CONVENIENCE FOR THE CITY DWELLERS



‘A’ DAILY DELI

Whether you are a Starbucks or Teavana fans, you can enjoy the “Grande” happiness. Just across the road from Aspen Condo, your familiar barista would welcome you with your favorite cup. Moreover, you can get freshly baked pastries from S&P for breakfast.

‘A’ SHORTCUT TO HAPPINESS

The location is across from Sikarin Hospital. Aspen Condo is connected to several main roads such as Srinakarin Road and Bangna-Trad Road, allowing you to reach your destinations in mere minutes. Conveniently access BTS Sukhumvit Line (Mo-Chit - Bearing) and the coming MRT Yellow Line (Ladprao - Samrong) in the near future.

‘A’ HEAVEN FOR THOSE WHO LOVE SHOPPING

Never miss any new collections of your favorite brands. Just a few minutes away, Aspen Condo is surrounded by shopping district, including premium department stores and supermarkets, ie. Central Plaza Bangna, Mega Bangna, Big C Bangna, Foodland and BITEC Bangna exhibition center, to update your fashion trends, technology and lifestyle.

‘A’ PLACE FOR THE DESIGN LOVERS

Aspen Condo’s location is suited for the design enthusiasts. In a few kilometers from your condo, you can explore the inspiration to decorate your space at Index Living Mall Bangna, SB Furniture, Chic Republic, and IKEA Bangna.

‘A’ SMART CHOICE FOR YOUR FAMILY

Save time on daily commute by being near the top educational institutions, such as Saint Joseph Bangna School, Berkeley International School, etc. You and your family will have more time for happiness, and never get tired of traffic jams.



**LIVE
+ LIFE
+ REST
= ASPEN**



Computer-generated image.

Project Name: Aspen Condo Phase B; Project Owner: Mana Patanakarn Co., Ltd. [Affiliated to Nawarat Patanakarn PCL]; Registered Address: 2/3 Bangna Tower Building A, 18th Floor, Moo 14, Bangna-Trad Road K.M.6.5, Bangkaew Subdistrict, Bangplee District, Samutprakarn 10540, Tel: 02-730-2101; Registered Capital: THB 1,100 Million (Fully Paid); Authorized Directors: 1. Mr. Pasan Swasiburi, 2. Mr. Apichart Rakchang; Project Location: Lasalle Road (Sukhumvit 105), Bangna Subdistrict, Bangna District, Bangkok; Project Features: 2 buildings of 8-storey condominiums, 398 units in total, sorted into building B1 (199 units) and B2 (199 units); Land Title Deed No. 2910, Parcel No. 2172, Subdistrict No. 37292, Bangna Subdistrict, Bangna District, Bangkok Province; Project Area: 3-1-65.5 rai; Construction Permit No. วุจ.45/2559; The land is under obligation with Krungthai Bank, 351 million baht in total.; Juristic person will be registered after project completion; Construction Commencement: Q1/2017; Expected Construction Completion: Q3/2018; *Mana Patanakarn Co., Ltd. reserves all rights to change and/or alter the details or conditions provided in this documentation without prior notice. Information provided is deemed accurate on December 1st, 2016.

LIFESTYLE CONDOMINIUM ON LASALLE

Project Name	Aspen Condo
	Urban One-Stop Living
Location	Soi Lasalle (Sukhumvit 105 Rd.) Bangna, Bangkok
Land Area	3-1-65.5 Rai
Project Type	8-storey condominium, 2 buildings, 398 units
Developer	Mana Patanakarn Co., Ltd.
Architect	ARbay Co., Ltd.
Interior Architect	N7A Co., Ltd.
Landscape Architect	Landscape Architects of Bangkok Co., Ltd.
Facilities	Garden Swimming Pool Urban Alternative Gym Urban Idea Space Urban Greenscape
Security System	24-hour Security Guard and CCTV, Key Card Access



Type	Area (sq.m.)
One bedroom (A)	23.64 - 24.09
One bedroom (B)	26.31 - 26.97
One bedroom (C1)	34.41 - 34.98
One bedroom (C2)	34.65 - 34.98

02 136 5995
MANAPAT.CO.TH





ASPEN CONDO LASALLE

MANA PATANAKARN CO., LTD.
18TH FLOOR, BANGNA TOWER A BUILDING,
2/3 MOO 14, BANGNA-TRAD ROAD, KM.6.5
BANGKAEW, BANGPLEE, SAMUTPRAKARN 10540

TEL. 02 730 2101 | FAX. 02 044 1221

nexus
Innovative Real Estate Solutions

MANA

NAWARAT